

# CUB

## CNC Lathes



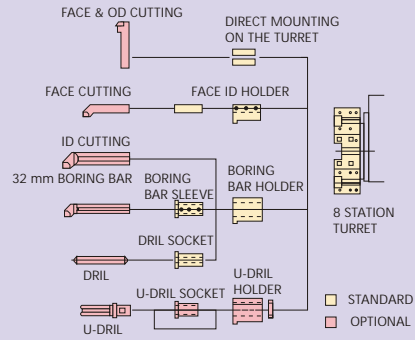
- Rigid bed
- Saddle (Z) with V and flat guideways
- Cross slide (X) with dovetail guideways
- Cartridge type robust spindle with rpms upto 6000
- 8 station turret
- Tailstock with hyd. quill actuation
- 20 m/min rapid rates both axes
- Compact foot print
- Ideal for cell manufacturing layout
- Maintenance friendly

## SPECIFICATIONS

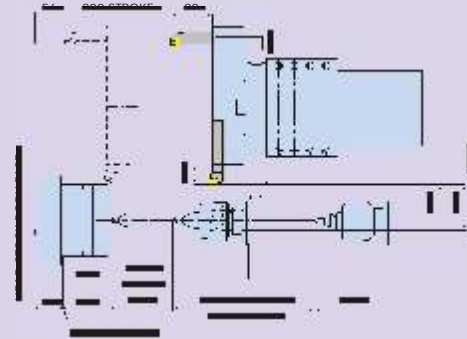
	Unit	CUB
<b>CAPACITY</b>		
Between centre length	mm	280
Max. machining dia.	mm	140
Max. turning length	mm	200
<b>SPINDLE</b>		
Spindle nose		FLAT (Ø110)
Bore thro' spindle	mm	36
Bar capacity (max.)	mm	25*
Front bearing bore	mm	60
Standard chuck size	mm	135
Speed range (inf. variable)	rpm	50-4000
Maximum speed (opt)	rpm	5000/6000
<b>SLIDES</b>		
X axis stroke	mm	87
Z axis stroke	mm	200
Feed rate (inf. variable)	mm/min	0-10,000
Rapid traverse rate - X axis	m/min	20
- Z axis	m/min	20
<b>TAILSTOCK</b>		
Quill diameter	mm	50
Quill stroke	mm	120
Taper in quill		MT-4
Thrust (adjustable)	kgf	150 (max.)
Base travel	mm	270
<b>TURRET</b>		
No. of stations		8
Max. boring bar dia.	mm	32
Tool cross section	mm	20 x 20
<b>WEIGHT (approx)</b>		
	kgs	2200
<b>DIMENSIONS (L x W x H)</b>		
CNC System & drive package	mm	1900 x 1225 x 1880 Fanuc (opt. Siemens)

Specifications correct at the time of print. Owing to continuous upgradation of our products, the specifications are subject to change without notice.

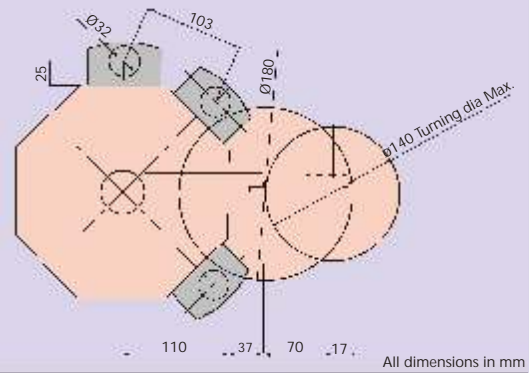
## TOOLING DIAGRAM



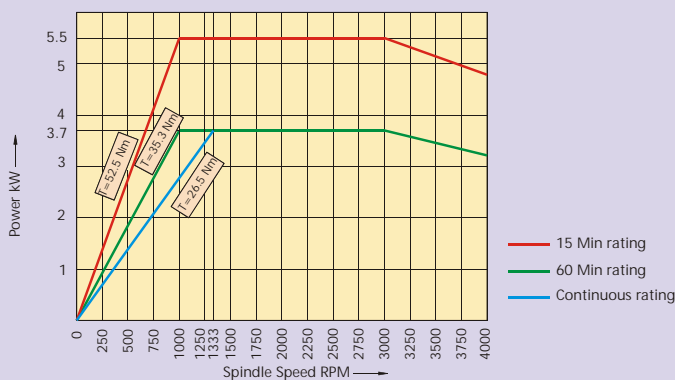
## MACHINING DIAGRAM



## INTERFERENCE DIAGRAM

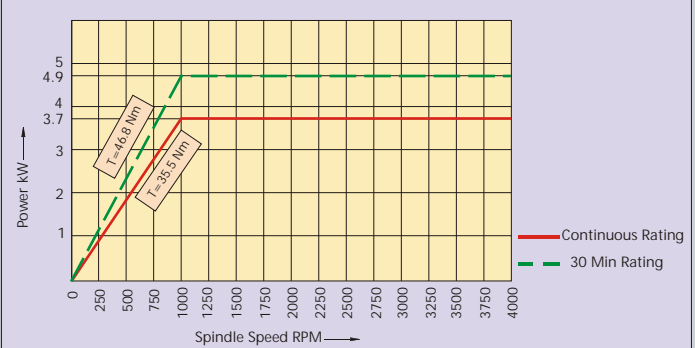


## WITH FANUC PACKAGE



- Spindle motor power (continuous) kW 3.7
- Spindle motor power (15 Min. rating) kW 5.5
- Full power range rpm 1000-4000

## WITH SIEMENS PACKAGE



- Spindle motor power (continuous) kW 3.7
- Spindle motor power (10 Min. rating 50% Int. Duly Cycle) kW 4.9
- Full power range rpm 1000-4000



## ACE DESIGNERS LTD.

Plot No.7 & 8, II Phase, Peenya Industrial Area, Bangalore - 560 058  
Tel : +91-80-2218 6700, Fax : +91-80-2218 6723, E-mail : [acedesigners@acemicromatic.com](mailto:acedesigners@acemicromatic.com)  
Website : <http://www.acedesigners.co.in>

Marketed and Serviced by : **Micromatic Machine Tools Pvt. Ltd.**

- AURANGABAD : Tel: 0240-2552309, Email: [mmtaur@acemicromatic.com](mailto:mmtaur@acemicromatic.com) • BANGALORE : Tel: 080-22263724 / 22389668, Email: [mmtblr@acemicromatic.com](mailto:mmtblr@acemicromatic.com)
- CHENNAI : Tel: 044-23741544 / 23741734 / 23740921, Email: [mmtche@acemicromatic.com](mailto:mmtche@acemicromatic.com) • COIMBATORE : Tel: 0422-2520183 / 2523141, Email: [mmtcb@acemicromatic.com](mailto:mmtcb@acemicromatic.com)
- DELHI : Tel: 011-22025846 / 22026874, Email: [mmtdel@acemicromatic.com](mailto:mmtdel@acemicromatic.com) • KOLKATA : Tel: 033-55295693, Email: [mmtkal@acemicromatic.com](mailto:mmtkal@acemicromatic.com)
- MUMBAI : Tel: 022-26862017 / 26860099, Email: [mmtbom@acemicromatic.com](mailto:mmtbom@acemicromatic.com)
- PUNE : Tel: 020-27479661 / 27481438, Email: [mmtpune@acemicromatic.com](mailto:mmtpune@acemicromatic.com)

• Total solutions • Total customer service  
**AceMicromatic**  
Group Company